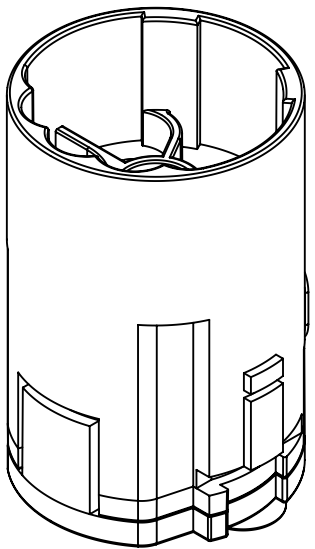
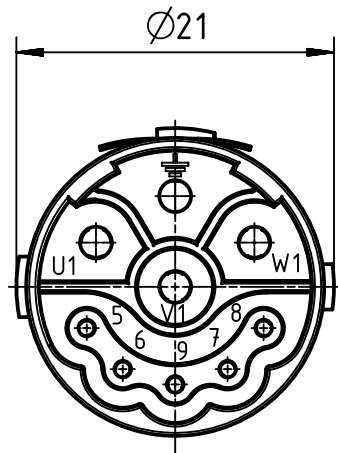
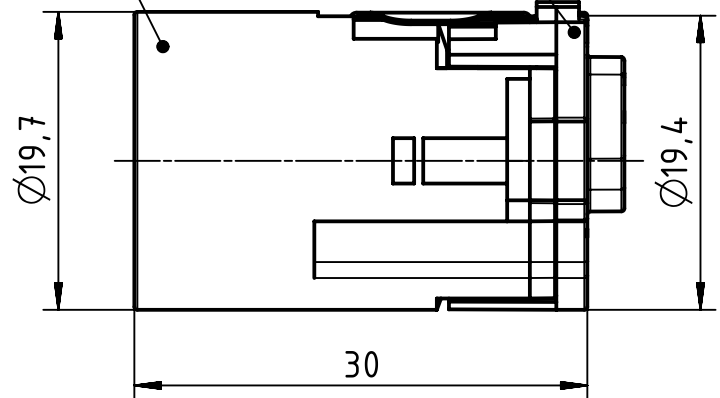


upper part, male
bottom part, male



enclosed as two parts

	All rights reserved Department EL PD	All Dimensions in mm Original Size DIN A4		Scale 2:1	Free size tol.		Ref.				
		Created by DYCKC		Inspected by GRUBES		Standardisation TIEMANNA		Date 2019-07-19		State Final Release	
HARTING Electric GmbH & Co. KG D-32339 Espelkamp		Title M23 P 5+3+PE Male-C (A)						Doc-Key / ECM-Nr. 100737265/UGD/000/E 500000155114			
		Type TB		Number 09 15 609 3001				Rev. E		Page 1/1	